



PARK RIDGE PRESBYTERIAN CHURCH
CAPITAL CAMPAIGN BOOKLET

WE ARE a church that



SHARES GOD'S LOVE

through faithful, engaging, and inspiring experiences



GROWS IN FAITH

through building relationships that help us live like Jesus every day



SERVES OUR NEIGHBORS

by bringing God's love to our community through service opportunities & mission partnerships



THE FOR OUR FUTURE VISION

God is calling Park Ridge Presbyterian Church to
Strengthen the Foundation FOR OUR FUTURE
so every person who connects to our church
will experience God's life-changing love!

A stronger foundation for our future will:

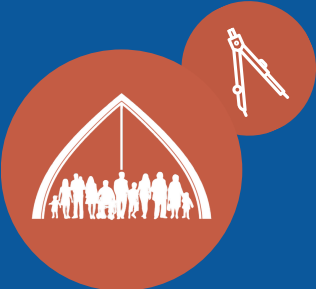
- Expand the capacity of our core ministries for people of all ages and abilities
- Enhance our family ministries
- Improve our outreach ministries
- Reinforce the quality of our worship experiences
- Ensure the preservation of our buildings and grounds

**“That one is like a person building a house,
who dug deeply and laid the foundation on rock.”**

Luke 6:48

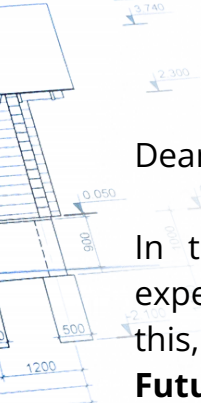


TABLE OF CONTENTS



- Vision Letter 1
- Campaign Overview 3
- Member Testimonies 4
- Projects, Timelines, and Budgets 6
- North Light Well Projects 7
- Family Center Light Well Projects 8
- Courtyard Preservation and Storm Water Management Improvements 9
- Capital Maintenance Projects 10
- Sanctuary Audio Enhancements 10
- Chapel Restoration and Renovation 11
- Engaging For Our Future 12
- Discerning a Gift For Our Future 13
- Frequently Asked Questions 14
- For Our Future Prayer 15





Dear Park Ridge Presbyterian Church,

In these challenging times, we believe every person needs to experience God's life-changing love in meaningful ways. To support this, our church is seeking to **Strengthen the Foundation For Our Future**. God wants us to embrace our calling to be an engaging and inspiring church that shares God's love, grows in faith, and serves our neighbors in such amazing ways so that more and more people experience God's life-changing love every day of their lives.

We are extending this invitation to you to participate in a special season of *prayer, support, and investment* that will enable us to faithfully and boldly embark on the next season of ministry and mission for our future. It takes each of us to help God's dream for our church become a reality.

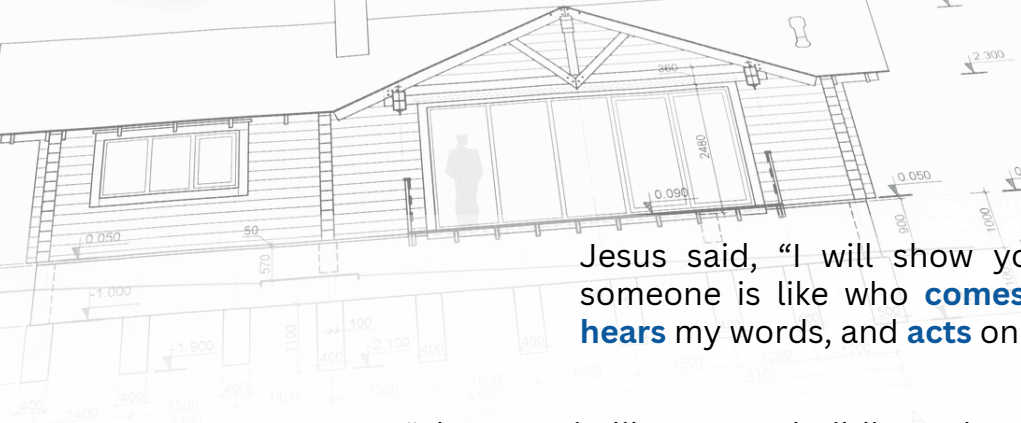
We pray that God will use the **For Our Future Campaign** to help us strengthen the foundation that supports our current ministry efforts. We can then create an even more significant impact in the short term and well into the future while faithfully preserving and maintaining our buildings and grounds so they can continue to support our ministry.

We hope you will accept this invitation to join us on the **For Our Future** journey and engage in all the campaign opportunities over the next few weeks. Please join us in praying that God will use this special season to help us *Strengthen the Foundation For Our Future*.

With gratitude,

Rev. Josh Erickson Mr. Jim Oates
Senior Pastor Campaign Chair



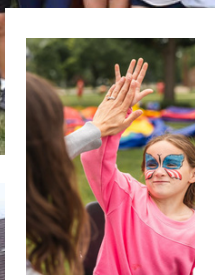


Jesus said, “I will show you what someone is like who **comes** to me, **hears** my words, and **acts** on them.”

“That one is like a man building a house, who dug deeply and laid the **foundation on rock**;

when a flood arose, the river burst against that house but could not shake it, **because it had been well built.**”

Luke 6:47-48



THE FOR OUR FUTURE CAMPAIGN

Strengthening the foundation to create a greater ministry impact and preserve our buildings and grounds

GREATER MINISTRY IMPACT

- Expand the capacity of our core ministries for people of all ages and abilities
- Enhance our family ministries
- Improve our outreach ministries
- Reinforce the quality of our worship experiences

BUILDINGS AND GROUNDS PRESERVATION

- Faithfully preserve and maintain our buildings and grounds so they can continue to support our ministry well into the future

CAMPAIGN PROJECT AREAS

- North Light Well and Family Center Light Well Projects
- Courtyard Preservation and Storm Water Management Improvements
- Capital Maintenance Projects
- Sanctuary Audio System Improvements
- Chapel Restoration and Renovation

TIMELINE

- For Our Future Launch - Fall 2024
- Three-Year Giving Period – 2025-2027
- Project Implementation Period – 2025-2027



WE ARE FOR OUR FUTURE!

CORINNE FARRELL



“ I’m excited about this campaign because of the growth I have witnessed in our church over the last few years. Continuing to invest in the future will only expand that growth and increase the impact of our ability to do God’s work in the world. ”

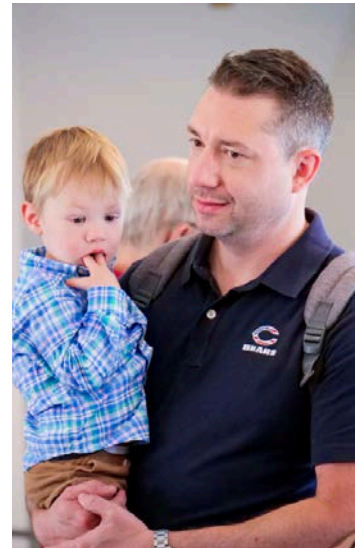
LAUREN BROWN

“ Our family is excited about the For Our Future Campaign because we have been welcomed into a thriving community of Christ followers here at PRPC. We hope for all sorts of opportunities for each of our three children to do God’s work. ”





We are
FOR OUR FUTURE
so everyone
experiences
the life-changing
love of God!



FOR OUR FUTURE PROJECTS, TIMELINE, AND BUDGETS

2025 PROJECTS

- North Light Well and Family Center Light Well Projects
- Courtyard Preservation and Storm Water Management Improvements

Projects Total Budget - \$225,000

2026 PROJECTS

- Capital Maintenance Projects

Projects Total Budget - \$55,000

- Sanctuary Audio System Enhancements

Projects Total Budget - \$20,000

2027 PROJECTS

- Chapel Restoration and Renovation

Projects Total Budget - \$25,000

**TOTAL CAMPAIGN GOAL:
\$325,000**

Additional projects will be completed if we exceed the above goal!
Please see the campaign FAQs on page 14 for details about this exciting prospect.

NORTH LIGHT WELL PROJECTS



Below-grade work area

Retention wall repairs are needed on the top area and the side facing our neighbor.

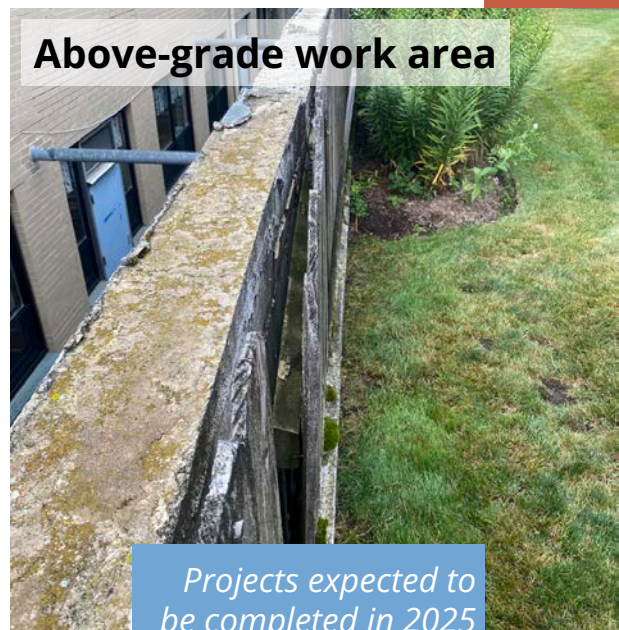
The above-grade improvements include:

- Repair and cap the top of the wall to prevent disintegration
- Remove and replace the fence
- Remove invasive plants at the west end of the light well
- Redirect downspouts away from this area
- Relocate the neighbor's shed to allow access for this work

The North light well is located between the family center and a residential neighbor. It provides both natural light and the emergency exit for several rooms in the lower level.

The below-grade improvements include:

- Remove and replace storm drains with a new drainage system with an all-seasons discharge pump
- Pour a new concrete floor
- Repair cracks in the retaining walls
- Replace broken exterior safety lights



Above-grade work area

Projects expected to be completed in 2025



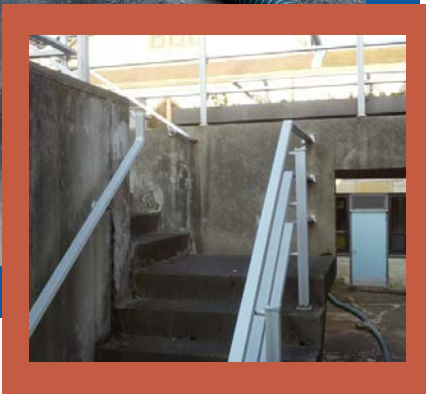
FAMILY CENTER LIGHT WELL PROJECTS



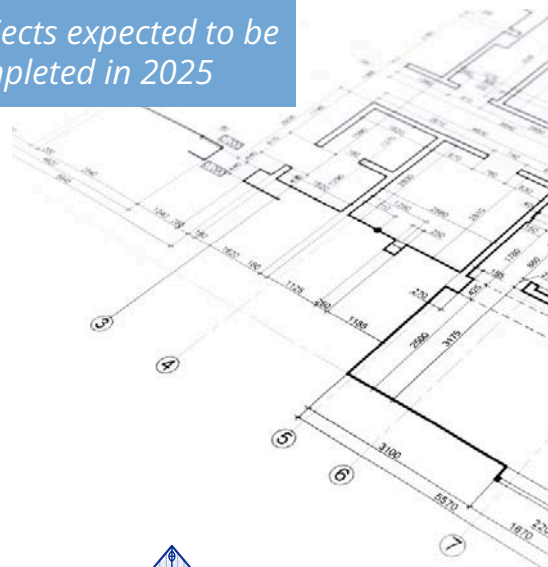
The family center light well is located between the family center and the courtyard. It provides natural light to our main Sunday school room, church nursery, and another classroom.

The family center light well improvements include:

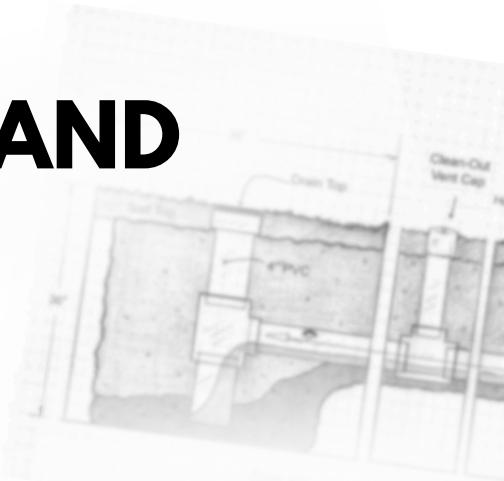
- Install new railings for safety and improved structural integrity
- Repair the concrete bridge walkway
- Repair the concrete stairs
- Configure downspouts to direct the flow of water away from this light well



Projects expected to be completed in 2025



COURTYARD PRESERVATION AND STORM WATER MANAGEMENT IMPROVEMENTS



Projects expected to be completed in 2025

Much of the storm water from the roofs of the sanctuary, lounge, family center, and the chapel flow into the courtyard or the adjacent light wells. The improvements will direct the flow of the courtyard storm water out of this area in a more effective manner to alleviate stress on the courtyard retaining walls and maximize the life of the original light well drains.

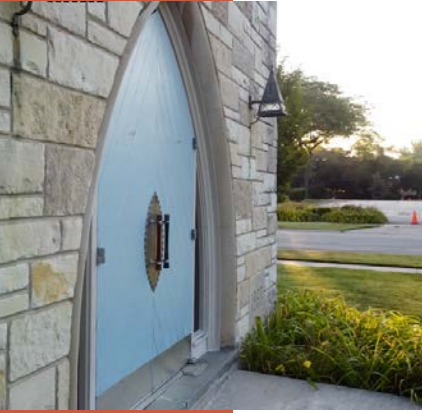
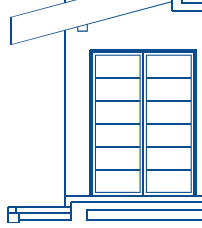
Improvements include:

- Direct all interior draining downspouts into a new drain tile system
- Install a robust discharge pump to pump water out of the courtyard
- Remove old courtyard drains and level the ground

The existing beautiful courtyard landscaping will be protected and replaced if needed.



CAPITAL MAINTENANCE PROJECTS



Several capital projects are needed to continue faithfully maintaining our facilities for our future. PRPC leadership has prioritized these two key areas to be included in this capital campaign:

- Repair, renovate, or replace exterior doors throughout the building;
- Continued masonry restoration

Projects expected to be completed in 2025-2026

SANCTUARY AUDIO SYSTEM ENHANCEMENTS

Our music ministry continues to grow in size and diversity of musical styles! We are in need of some additional components for our sanctuary sound system:

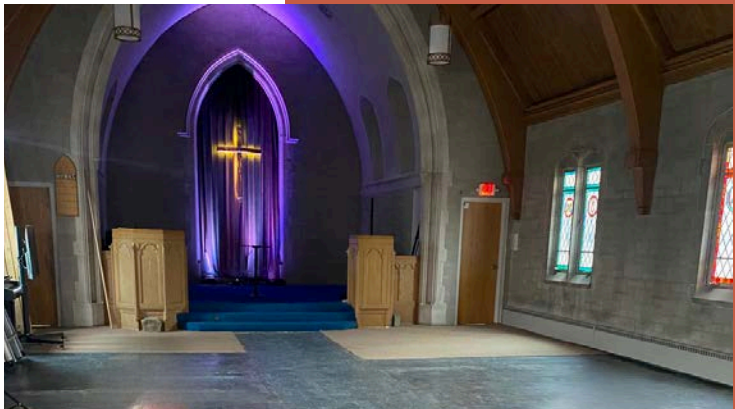
- In-ear monitor system for the band
- Additional handheld wireless microphones
- Installing permanent wired inputs for additional musical instruments

Projects expected to be completed in 2026



CHAPEL RESTORATION AND RENOVATION

Updating our chapel will enhance this underused area and create additional space for our children, youth, and adult programs. As a vital member of our surrounding community, PRPC will provide additional gathering space for church and community small groups and events.



A few transitional improvements were made in the Spring of 2024 that have shown the potential impact of a fully updated chapel.



100% ENGAGEMENT FOR OUR FUTURE

God is calling on every person in the PRPC family to strengthen the foundation for our future! You are invited to engage in the For Our Future Campaign by PRAYING, SUPPORTING, and INVESTING.

PRAYING

We need our entire church family to be praying for the success of our present ministry and the success of the For Our Future campaign.

SUPPORTING

We all have been blessed with abilities that can be used to support God's vision for our church and the world. Let's devote some of our time and skills to the important work of PRPC to prepare us for our future.

INVESTING

God is calling each of us to generously invest our financial resources for our future. There are two forms of giving for our church: regular giving and capital giving. The level of generosity will be different for each person or family.

The For Our Future Campaign represents one of several steps of generosity and stewardship that PRPC is taking to ensure our congregation has a vibrant future.

*"The rain fell, the floods came, and the winds blew and beat on that house, but it did not fall because it had been founded on rock."
Matthew 7:25*

DISCERNING A GIFT FOR OUR FUTURE

As you pray and discern how God might ask you to give during this time, allow this gift chart to be a conversation partner for you. This chart is a tool that can help you see how a sacrificial gift from you can make a substantial difference.

It is important to remember that God does not expect everyone to make equal financial gifts but to make an equal personal sacrifice through our gifts.

Number of Gifts Needed	Individual Gift Amount Over Three Years	Total	Cumulative Total
1 gift	\$50,000	\$50,000	\$50,000
2 gifts	\$30,000	\$60,000	\$110,000
3 gifts	\$20,000	\$60,000	\$170,000
3 gifts	\$15,000	\$45,000	\$215,000
5 gifts	\$10,000	\$50,000	\$265,000
6 gifts	\$5,000	\$30,000	\$295,000
6 gifts	\$2,500	\$15,000	\$310,000
10 gifts	\$1,000	\$10,000	\$320,000
10 gifts	\$500	\$5,000	\$325,000



FREQUENTLY ASKED QUESTIONS

Q: Why not use some of PRPC's reserve funds instead of running a capital campaign to fund these projects?

A: PRPC's financial solvency relies on the revenue stream from our reserves to supplement our annual budget gap. If we reduce these reserves, we may reduce our revenue stream to where we no longer fill that gap.

Q: Why did we use Horizons instead of running the campaign ourselves?

A: PRPC has limited experience running a capital campaign, and our staff does not have the bandwidth needed to support the work of a campaign. Horizons has the knowledge and expertise to run successful church fundraising campaigns. Historically, campaigns run by a consultant raise more funds than if a church tries to do it alone.

Q: What are we going to do about the parking lot renovation?

A: The parking lot renovation is a lower priority than the other projects considered for this campaign. We can patch the higher-traffic areas at a lower cost and postpone a full renovation to a later date.

Q: What additional projects can be completed if we exceed our fundraising target?

A: Additional projects on the shortlist include a chapel wheelchair lift, sanctuary livestream system enhancements, and more robust parking lot repairs.

Q: How do we ensure we manage the project cash flow to avoid overspending?

A: The projects will be implemented in stages to ensure the funds are available at the start of each project phase.



THE FOR OUR FUTURE PRAYER

To the God who strengthens all foundations,

Thank you for this church family that is a strong foundation in my life. When life is hard, this church reminds me I am not alone.

Thank you for the faithfulness of those who came before me and built a foundation for me to stand on.

Help me to do my part to strengthen the foundation for our future.

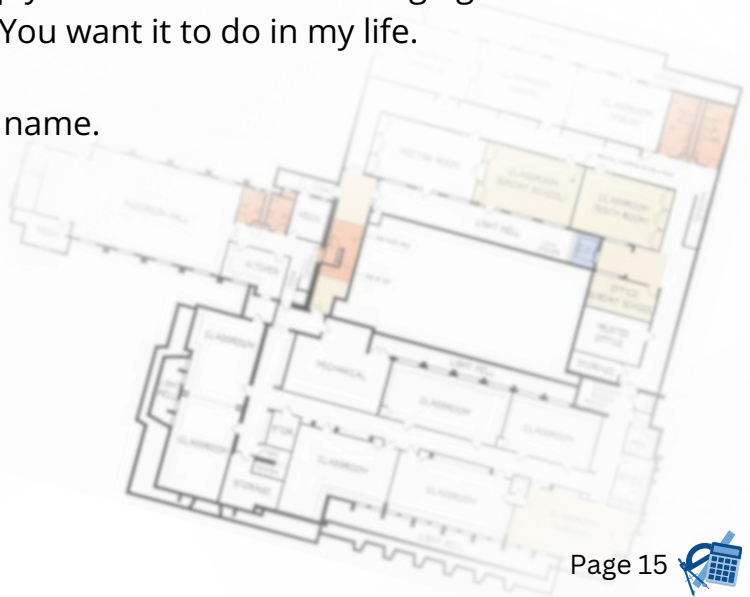
Lord, we can only be a church that is for our future if You are leading us.

Help everyone in our church to hear from You how You are leading them to personally strengthen the foundation for our future.

I know the whole world needs more of Your life-changing love. I am humble enough to know that I need it, too. Help me to more deeply embrace Your life-changing love so it can do the work You want it to do in my life.

I pray all this in Jesus' name.

Amen.





LEARN MORE AT

parkridgepresby.org/forourfuture

IMPORTANT DATES

For Our Future Kick-Off
Sunday October 13, 2024

Commitment Sunday
Sunday November 10, 2024

Reveal Sunday
Sunday November 17, 2024

SCAN THE QR CODE TO
LEARN MORE ABOUT
FOR OUR FUTURE

PARK RIDGE PRESBYTERIAN CHURCH
1300 WEST CRESCENT AVENUE
PARK RIDGE, IL 60068
847.823.4135



@PARKRIDGEPRESBY

